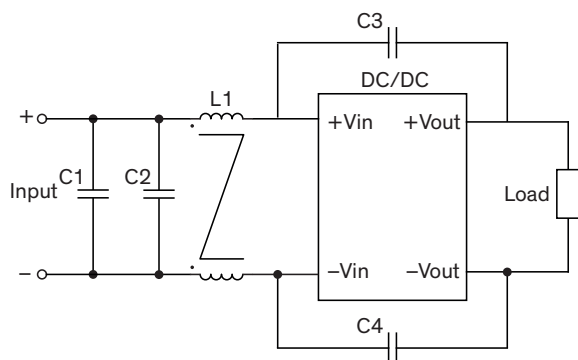


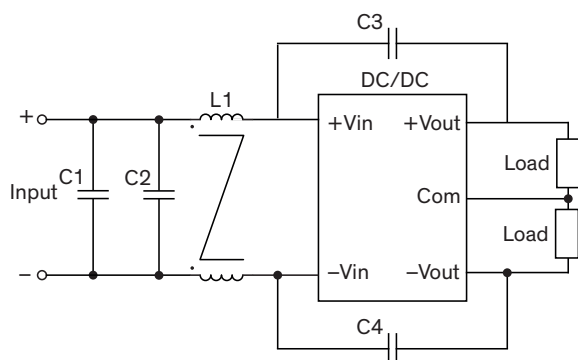
### EMI Consideration

Suggested filter to comply with EN 55032 Conducted and Radiated Emissions Class A limits

#### Single output models



#### Dual output models



### Suggested components to comply with EN 55032 Conducted and Radiated Emissions Class A limits

Model	C1	C2	L1	C3, C4
TEN 40-xxxxWIN	3.3 $\mu$ F / 100 V 1210 X7S MLCC	4.7 $\mu$ F / 100 V 1210 X7S MLCC	1 mA 7448031501	1000 pF / 2 kV 1206 X7R MLCC