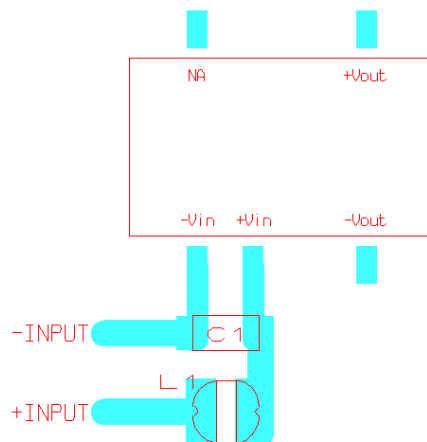
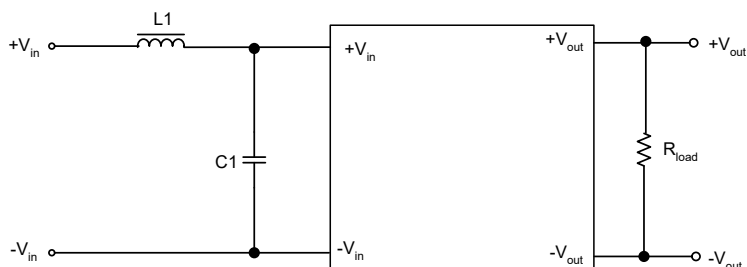


EMI Consideration

Suggested filter to comply with EN55022 Class A limits

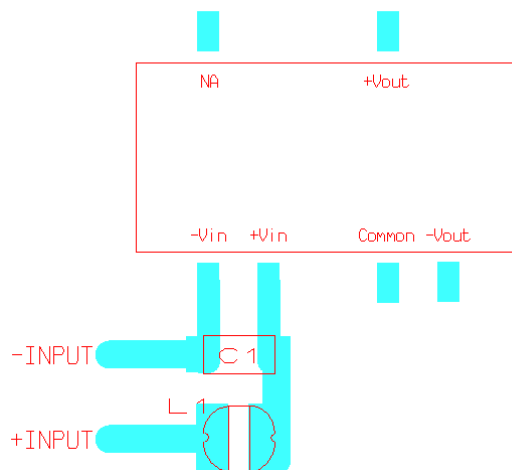
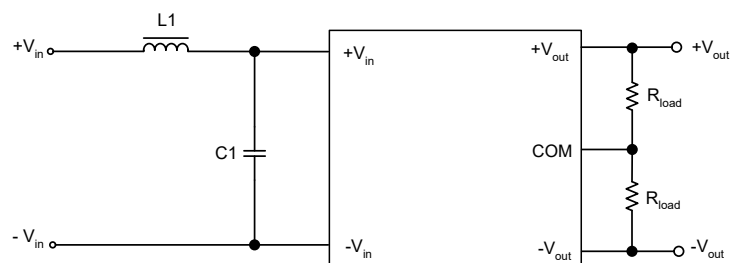
5 Vin (TES 1-051x) Single output models

Suggested Layout



5 Vin (TES 1-052x) Dual output models

Suggested Layout



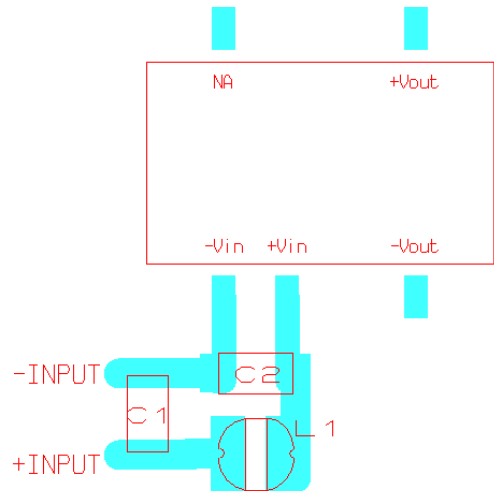
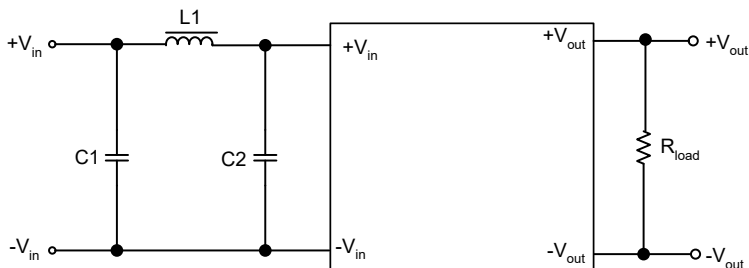
Model	Component	Value
TES 1-05xx models	C1	4.7 μ F / 25 V 1206MLC
	L1	4.7 μ H / 1.2 A SR0302

EMI Consideration

Suggested filter to comply with EN55022 Class A limits

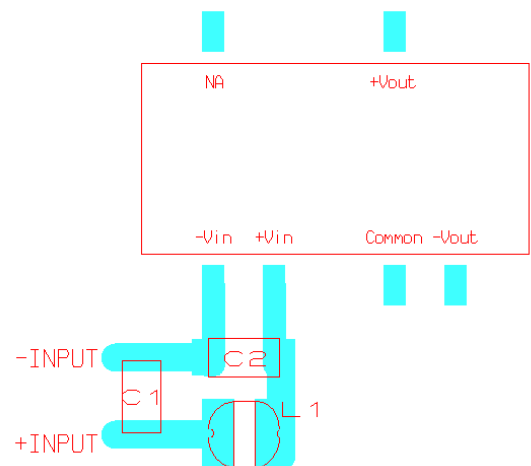
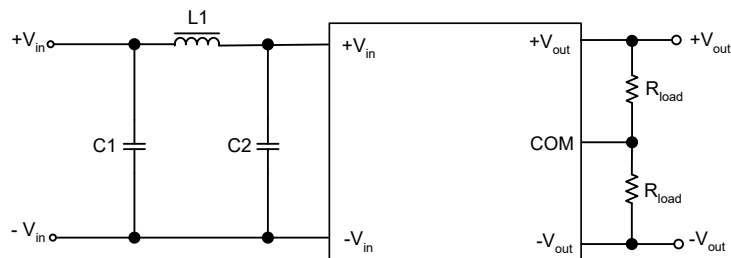
12 & 24 Vin (TES 1-121x & TES 1-241x) Single output models

Suggested Layout



12 & 24 Vin (TES 1-122x & TES 1-242x) Dual output models

Suggested Layout



Model	Component	Value
TES 1-12xx models	C1, C2	2.2 μ F / 25 V 1206MLC
	L1	2.2 μ H / 1.65 A SR0302
TES 1-24xx models	C1	4.7 μ F / 50 V 1206MLC
	C2	2.2 μ F / 50 V 1206MLC
	L1	2.2 μ H / 1.65 SR0302