

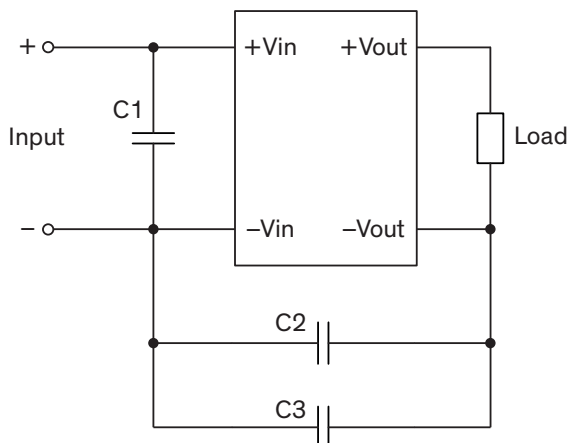
### EMI Consideration

#### Suggested filter to comply with EN 55032 Conducted and Radiated Emissions Class A limits

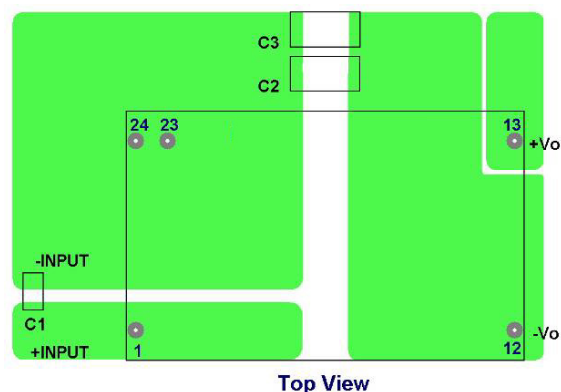
THB 3 series meet EN 55032 Conducted and Radiated Emissionas Class A without external components.

#### Suggested filter to comply with EN 55032 Conducted and Radiated Emissions Class B limits

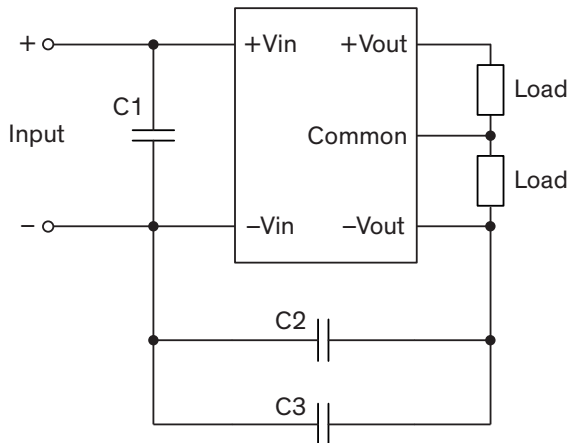
#### Single output models



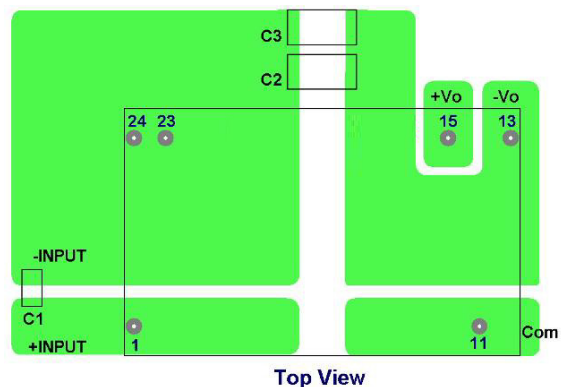
#### PCB layout suggestion



#### Dual output models



#### PCB layout suggestion



#### Suggested components to comply with EN 55032 Conducted and Radiated Emissions Class B limits

Model	C1	C2, C3
THB 3-05xx	22 $\mu$ F / 16 V / 1206 MLCC	100 pF / 6 kV / 2211 MLCC
THB 3-12xx	4.7 $\mu$ F / 25 V / 1206 MLCC	
THB 3-24xx	2.2 $\mu$ F / 50 V / 1206 MLCC	
THB 3-48xx	-	