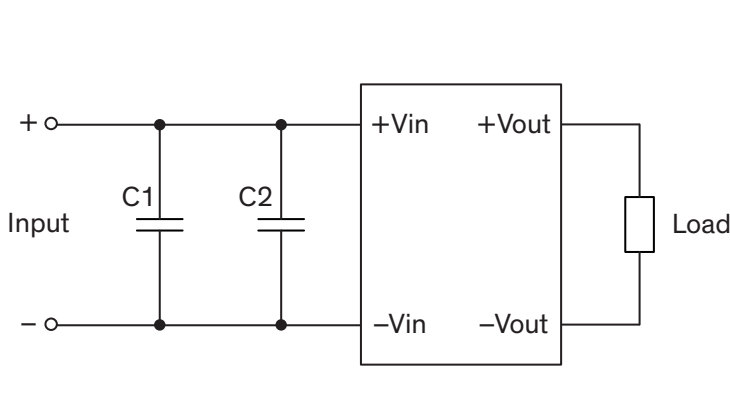


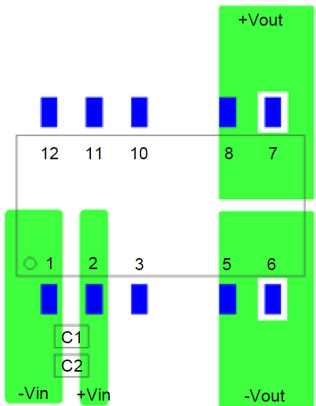
EMI Consideration

Suggested filter to comply with EN 55032 Conducted and Radiated Emissions Class A limits

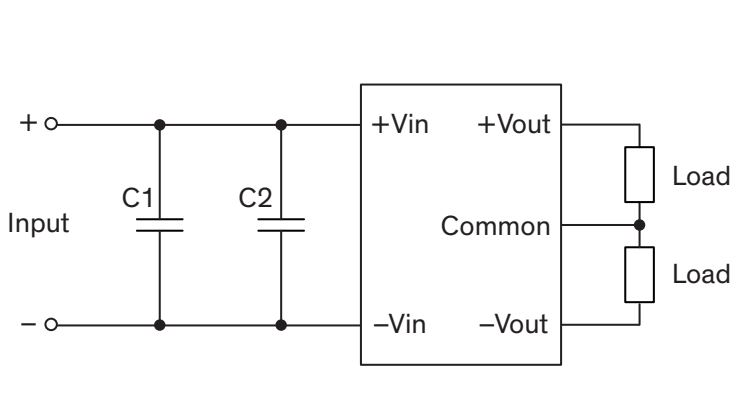
Single output models



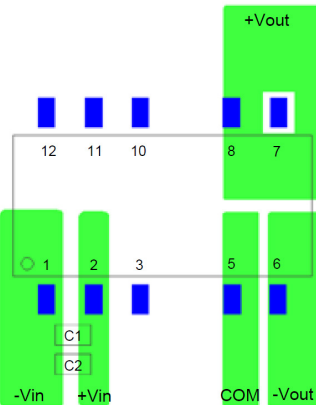
PCB layout suggestion



Dual output models



PCB layout suggestion

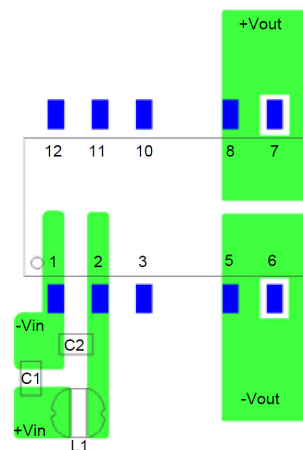
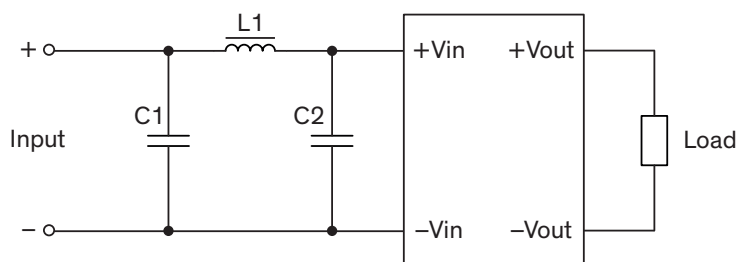


Suggested components to comply with EN 55032 Conducted and Radiated Emissions Class A limits		
Model	C1	C2
TES 1-05xxV	10 μ F / 16 V / 0805 MLCC	-
TES 1-12xxV	4.7 μ F / 16 V / 0805 MLCC	4.7 μ F / 16 V / 0805 MLCC

Suggested filter to comply with EN 55032 Conducted and Radiated Emissions Class A limits (continued)

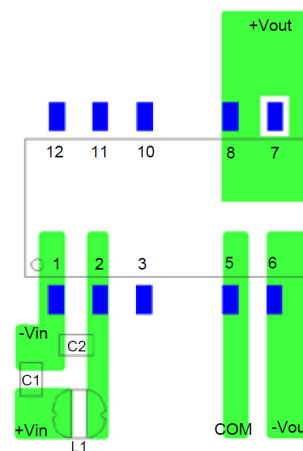
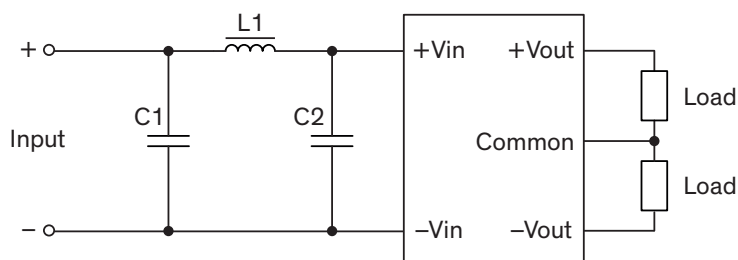
Single output models

PCB layout suggestion



Dual output models

PCB layout suggestion



Suggested components to comply with EN 55032 Conducted and Radiated Emissions Class A limits

Model	C1	C2	L1
TES 1-24xxV	4.7 μ F / 50 V / 0805 MLCC	4.7 μ F / 50 V / 0805 MLCC	2.2 μ H / 1.65 A / SR0302