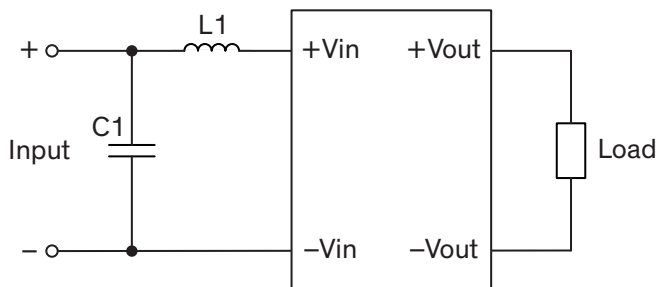


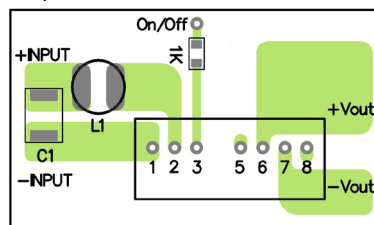
### EMI Consideration

#### Suggested filter to comply with EN 55032 Conducted Emissions Class A limits

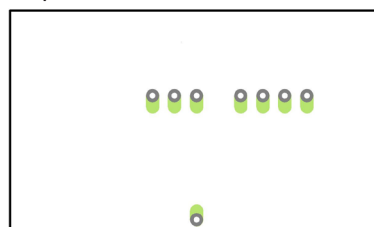
##### Single output models



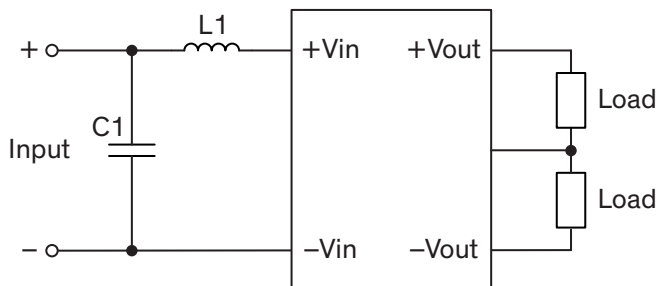
Top view



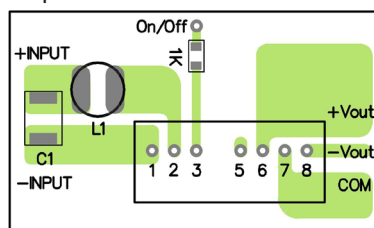
Top view



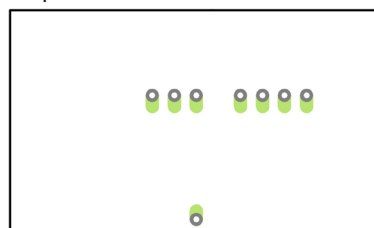
##### Dual output models



Top view



Top view



#### Suggested components to comply with EN 55032 Conducted Emissions Class A limits

Model	C1	L1
TMR 3-12xxWI	4.7 $\mu$ F / 25 V, 1210 MLCC	2.2 $\mu$ H / 3.8 A, 0.025 Ohm, SMD Inductor, TCK059
TMR 3-24xxWI	2.2 $\mu$ F / 50 V, 1210 MLCC	10 $\mu$ H / 1.4 A, 0.1 Ohm, SMD Inductor, TCK047
TMR 3-48xxWI	2.2 $\mu$ F / 100 V, 1210 MLCC	10 $\mu$ H / 1.4 A, 0.1 Ohm, SMD Inductor, TCK047

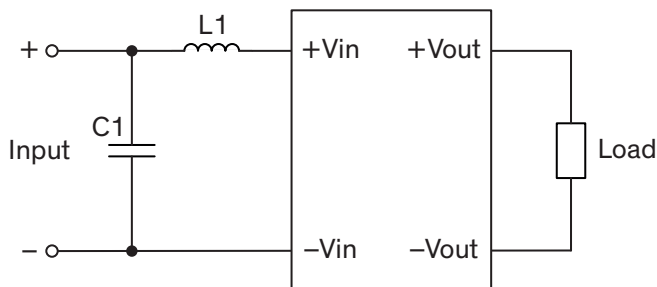
TCK-059 datasheet: [www.tracopower.com/overview/tck-059](http://www.tracopower.com/overview/tck-059)

TCK-047 datasheet: [www.tracopower.com/overview/tck-047](http://www.tracopower.com/overview/tck-047)

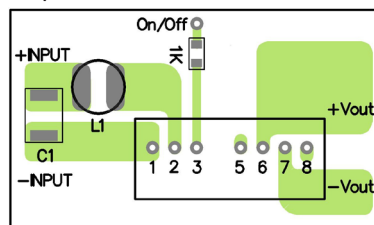
### EMI Consideration

#### Suggested filter to comply with EN 55032 Conducted Emissions Class B limits

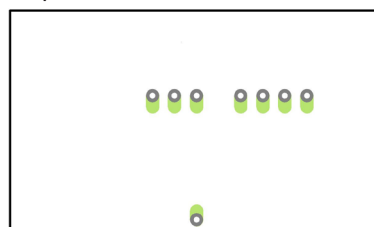
##### Single output models



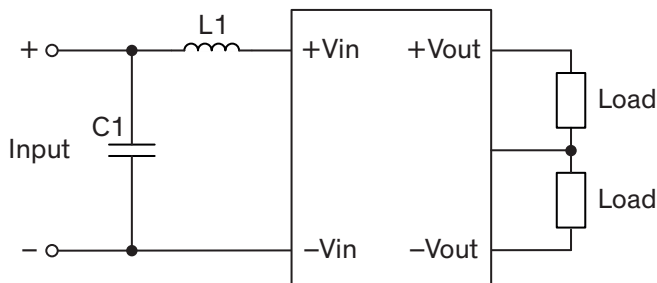
Top view



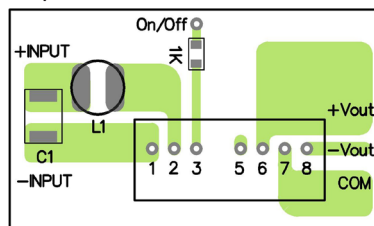
Top view



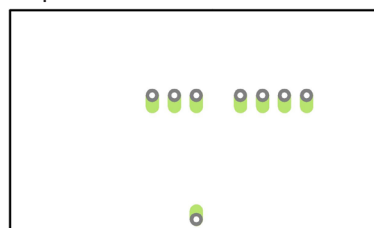
##### Dual output models



Top view



Top view



#### Suggested components to comply with EN 55032 Conducted Emissions Class B limits

Model	C1	L1
TMR 3-12xxWI	10 $\mu$ F / 25 V, 1812 MLCC	2.2 $\mu$ H / 3.8 A, 0.025 Ohm, SMD Inductor, TCK059
TMR 3-24xxWI	6.8 $\mu$ F / 50 V, 1812 MLCC	18 $\mu$ H / 1.2 A, 0.15 Ohm, SMD Inductor, TCK046
TMR 3-48xxWI	2.2 $\mu$ F / 100 V, 1812 MLCC	18 $\mu$ H / 1.2 A, 0.15 Ohm, SMD Inductor, TCK046

TCK-059 datasheet: [www.tracopower.com/overview/tck-059](http://www.tracopower.com/overview/tck-059)

TCK-046 datasheet: [www.tracopower.com/overview/tck-046](http://www.tracopower.com/overview/tck-046)