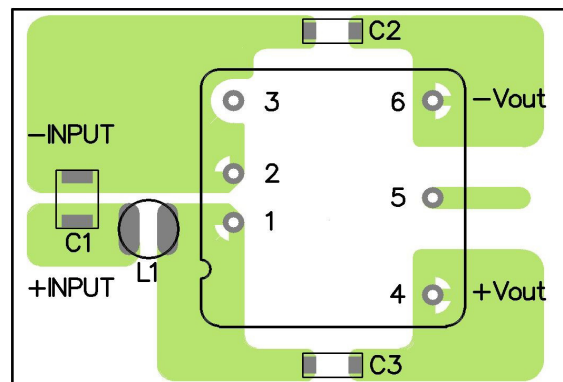
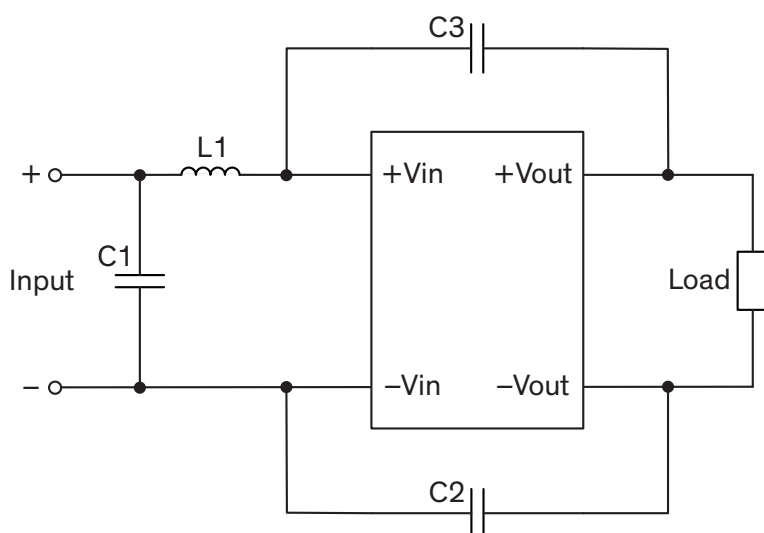


### EMI Consideration

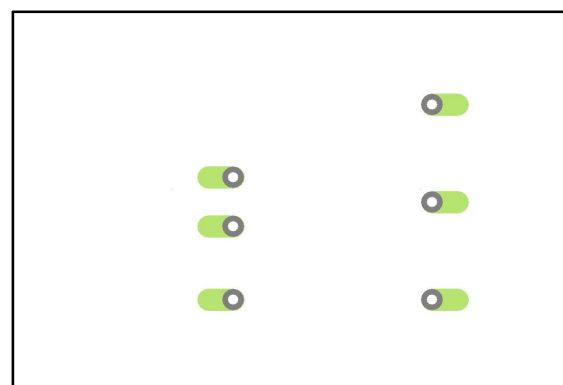
Suggested filter to comply with EN 55032 Conducted and Radiated Emissions Class A limits

#### Single output models

#### PCB layout suggestion



TOP view



BOTTOM view

#### Suggested components to comply with EN 55032 Conducted and Radiated Emissions Class A limits

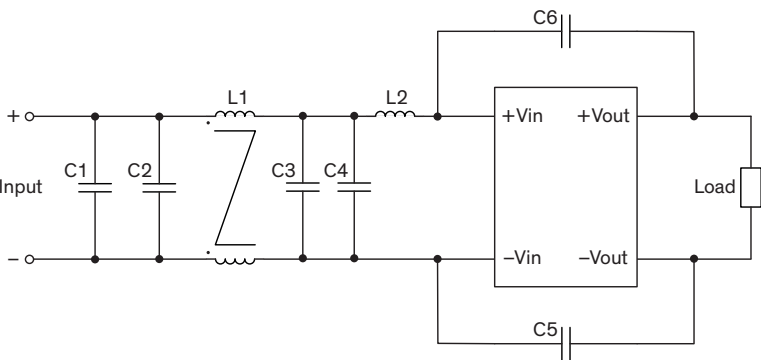
Model	C1	C2	C3	L1
TON 15-24xxWI	6.8 $\mu$ F / 50 V 1812 MLCC	470 pF / 3 kV 1808 MLCC	470 pF / 3 kV 1808 MLCC	10 $\mu$ H / 2.6A TCK-070 SMD Inductor
TON 15-48xxWI	2.2 $\mu$ F / 100 V 1812 MLCC	470 pF / 3 kV 1808 MLCC	470 pF / 3 kV 1808 MLCC	18 $\mu$ H / 1.6A TCK-071 SMD Inductor

TCK-070 datasheet: [www.tracopower.com/overview/tck-070](http://www.tracopower.com/overview/tck-070)

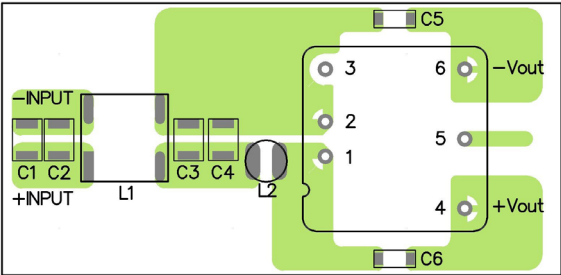
TCK-071 datasheet: [www.tracopower.com/overview/tck-071](http://www.tracopower.com/overview/tck-071)

**Suggested filter to comply with EN 55032 Conducted and Radiated Emissions Class B limits**

**Single output models**



**PCB layout suggestion**



TOP view



BOTTOM view

Suggested components to comply with EN 55032 Conducted and Radiated Emissions Class B limits					
Model	C1	C2, C3, C4	C5, C6	L1	L2
TON 15-24xxWI	-	6.8 $\mu$ F / 50 V 1812 MLCC	470 pF / 3 kV 1808 MLCC	145 $\mu$ H TCK-051 Common-Choke	10 $\mu$ H / 2.6 A TCK-070 SMD Inductor
TON 15-48xxWI	2.2 $\mu$ F / 100 V 1812 MLCC	2.2 $\mu$ F / 100 V 1812 MLCC	470 pF / 3 kV 1808 MLCC	325 $\mu$ H TCK-050 Common-Choke	33 $\mu$ H / 1.2 A TCK-069 SMD Inductor

TCK-050 datasheet: [www.tracopower.com/overview/tck-050](http://www.tracopower.com/overview/tck-050)  
TCK-050 datasheet: [www.tracopower.com/overview/tck-051](http://www.tracopower.com/overview/tck-051)  
TCK-070 datasheet: [www.tracopower.com/overview/tck-069](http://www.tracopower.com/overview/tck-069)  
TCK-071 datasheet: [www.tracopower.com/overview/tck-070](http://www.tracopower.com/overview/tck-070)