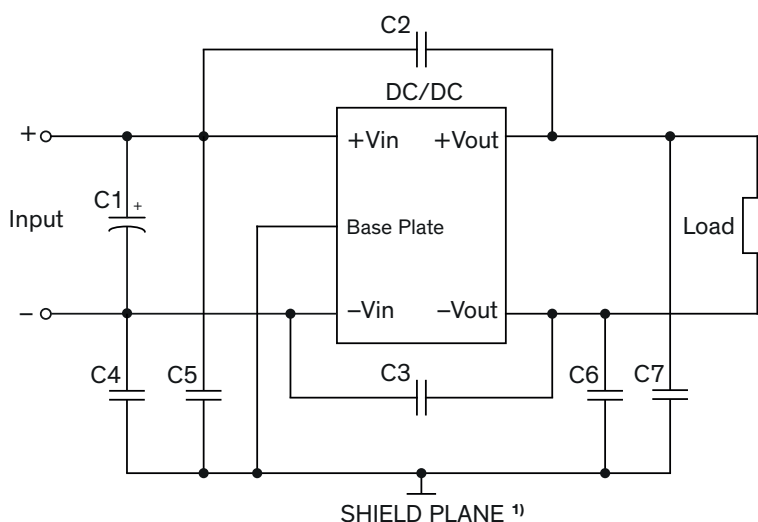


EMI Consideration

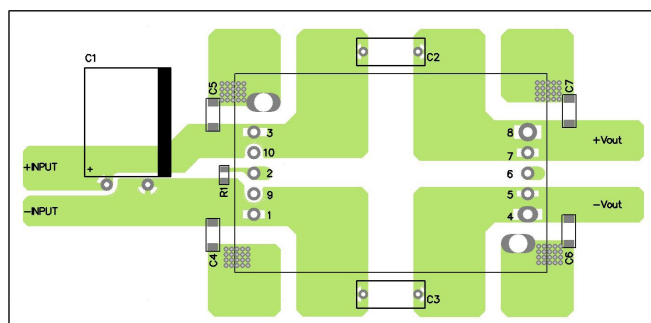
Suggested filter to comply with EN 55032 Conducted and Radiated Emissions Class A limits

TEP 40-36xxUIR

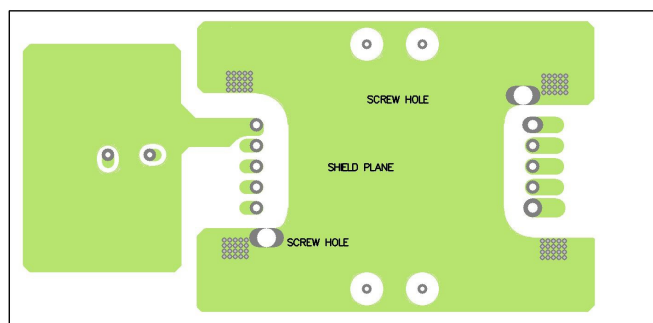
TEP 60-36xxUIR



PCB layout suggestion



Top view



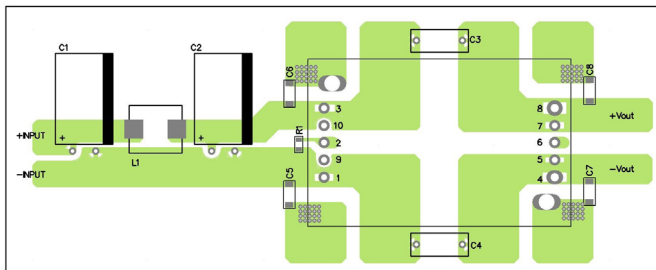
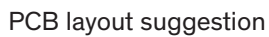
Bottom view

¹⁾ SHIELD PLANE: floating / isolated

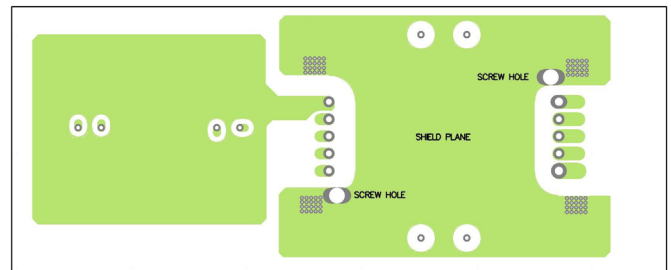
Suggested components to comply with EN 55032 Conducted and Radiated Emissions Class A limits

Model	C1	C2, C3	C4, C5, C6, C7
TEP 40-36xxUIR	220 μ F / 100 V	1000 pF	1000 pF / 3 kV
TEP 60-36xxUIR	Al Cap. (lie down) Chemi-con KY	TDK CD Y1	1808 MLCC

TEP 40-72xxUIR
TEP 60-72xxUIR



Top view



Bottom view

1) SHIELD PLANE: floating / isolated

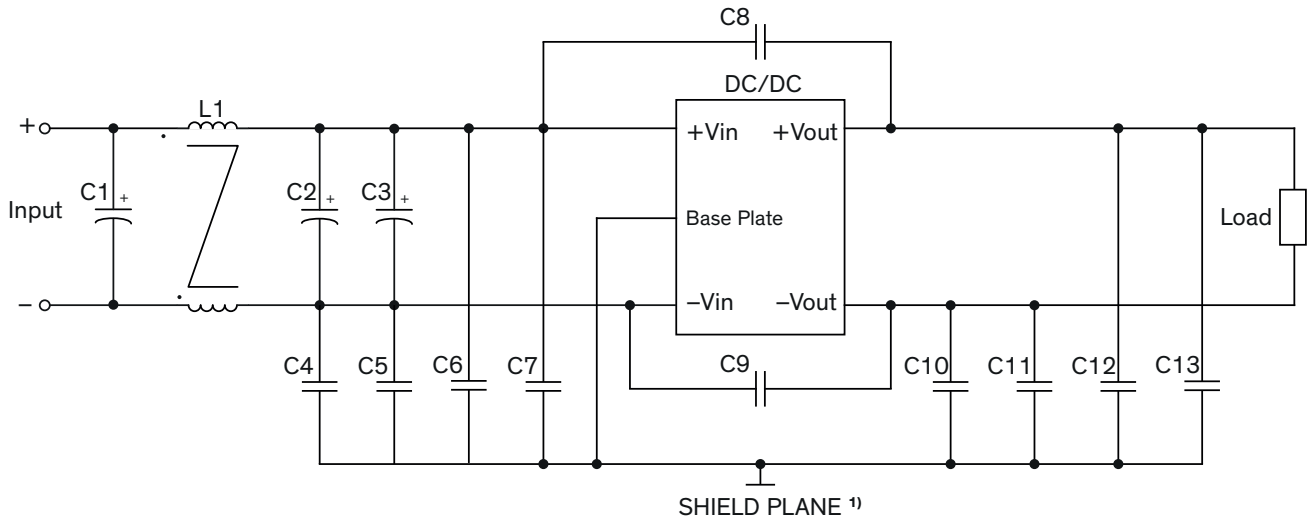
Suggested components to comply with EN 55032 Conducted and Radiated Emissions Class A limits				
Model	C1, C2	C3, C4	C5, C6, C7, C8	L1
TEP 40-72xxUIR TEP 60-72xxUIR	47 µF / 200 V Al Cap. (lie down) Chemi-con KY	1000 pF TDK CD Y1	1000 pF / 3 kV 1812 MLCC	8.2 µH TCK-166

TCK-166 datasheet: www.tracopower.com/overview/tck-166

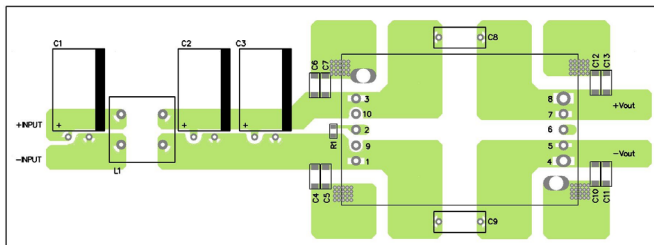
Suggested filter to comply with EN 55032 Conducted and Radiated Emissions Class B limits

TEP 40-36xxUIR

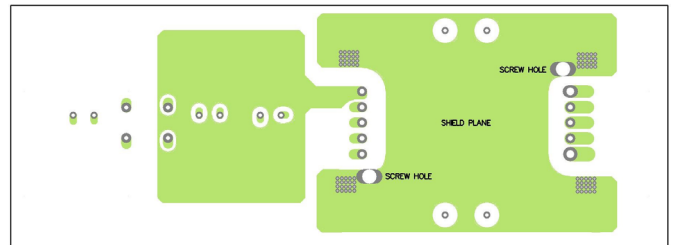
TEP 60-36xxUIR



PCB layout suggestion



Top view



Bottom view

¹⁾ SHIELD PLANE: floating / isolated

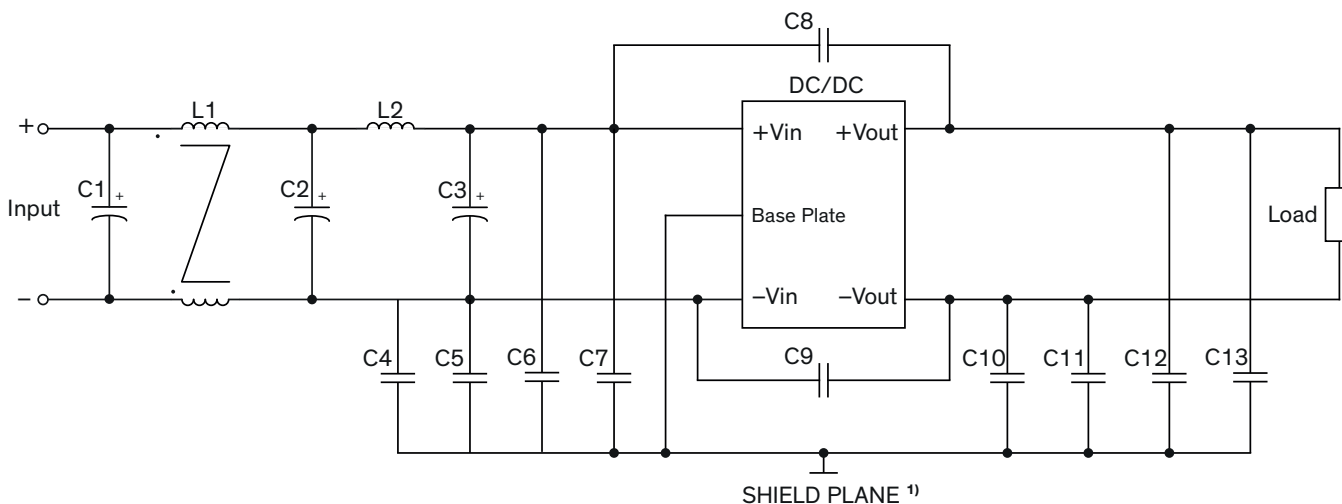
Suggested components to comply with EN 55032 Conducted and Radiated Emissions Class B limits

Model	C1, C2	C3	C8, C9	C4, C5, C6, C7, C10, C11, C12, C13	L1
TEP 40-36xxUIR TEP 60-36xxUIR	100 μ F / 100 V Al Cap. (lie down) Chemi-con KY	-	100 pF TDK CD Y1	1000 pF / 3 kV 1808 MLCC	285 μ H TCK-103

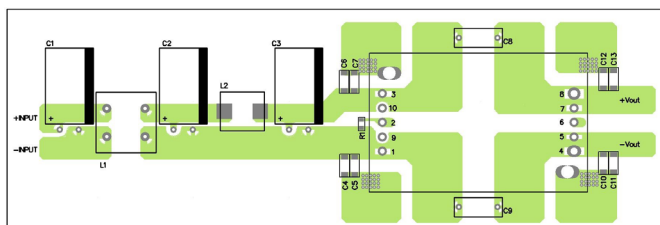
TCK-103 datasheet: www.tracopower.com/overview/tck-103

Suggested filter to comply with EN 55032 Conducted and Radiated Emissions Class B limits

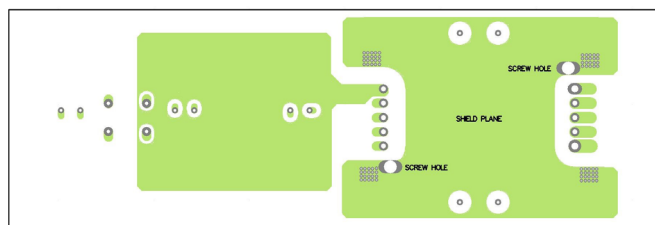
**TEP 40-72xxUIR
TEP 60-72xxUIR**



PCB layout suggestion



Top View



Bottom view

¹⁾ SHIELD PLANE: floating / isolated

Suggested components to comply with EN 55032 Conducted and Radiated Emissions Class B limits

Model	C1, C2, C3	C8, C9	C4, C5, C7, C10, C11, C12, C13	C6	L1	L2
TEP 40-72xxUIR TEP 60-72xxUIR	47 μ F / 200 V Al Cap. (lie down) Chemi-con KY	100 pF TDK CD Y1	1000 pF / 3 kV 1808 MLCC	-	500 μ H TCK-169	8.2 μ H TCK-166

TCK-166 datasheet: www.tracopower.com/overview/tck-166

TCK-169 datasheet: www.tracopower.com/overview/tck-169