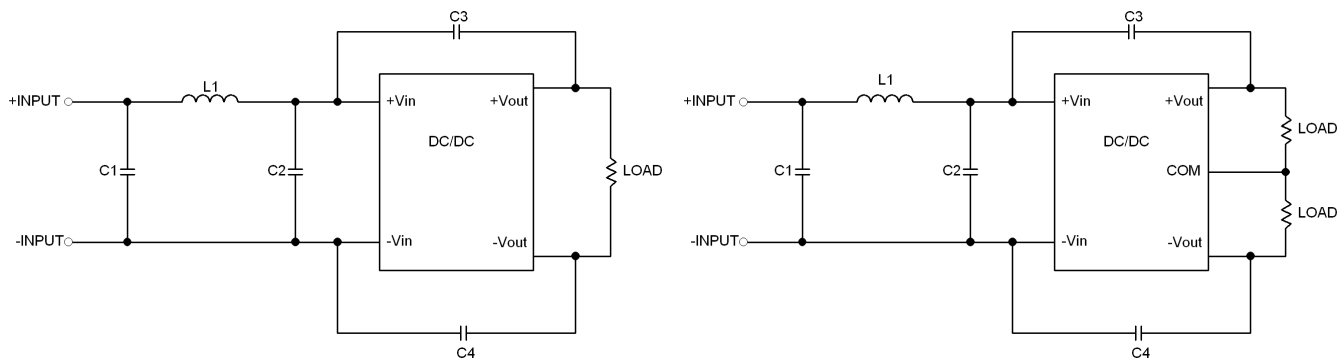


## EMI Consideration

### Recommended external EMI filter for EN55022 class A

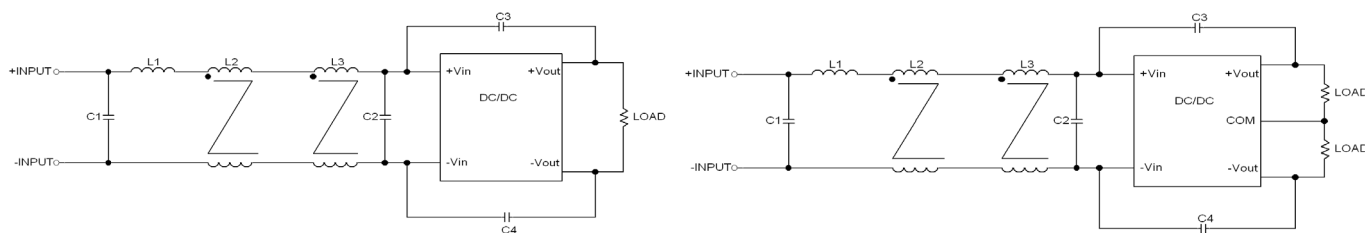


Model	C1, C2	C3, C4	L1
<b>TMR 6-24xWI</b>	10 $\mu$ F/ 50V 1206 MLCC	1000pF/3kV 1808 MLCC	10 $\mu$ H; 1A 1210 SMD Inductor TCK-120
<b>TMR 6-48xWI</b>	4.7 $\mu$ F/ 100V 1210 MLCC	1000pF/3kV 1808 MLCC	15 $\mu$ H; 0.8A 1210 SMD Inductor TCK-121

TCK-120: [www.tracopower.com/overview/tck-120](http://www.tracopower.com/overview/tck-120)

TCK-121: [www.tracopower.com/overview/tck-121](http://www.tracopower.com/overview/tck-121)

### Recommended external EMI filter for EN55022 class B



Model	C1, C2	C3, C4	L1	L2, L3
<b>TMR 6-24xWI</b>	10 $\mu$ F/ 50V 1206 MLCC	1000pF/3kV 1808 MLCC	10 $\mu$ H; 1A 1210 SMD Inductor TCK-120	5 $\mu$ H Common Choke TCK-122
<b>TMR 6-48xWI</b>	4.7 $\mu$ F/ 100V 1210 MLCC	1000pF/3kV 1808 MLCC	15 $\mu$ H; 0.8A 1210 SMD Inductor TCK-121	5 $\mu$ H Common Choke TCK-122

TCK-122: [www.tracopower.com/overview/tck-122](http://www.tracopower.com/overview/tck-122)