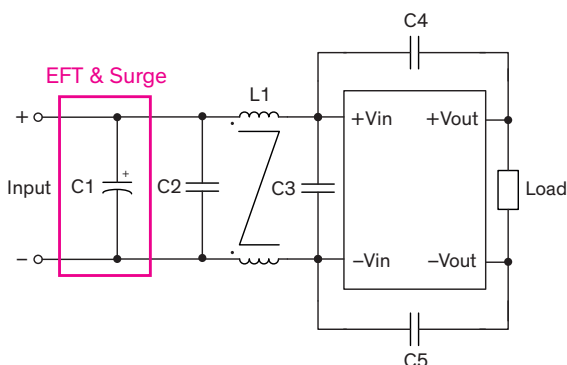


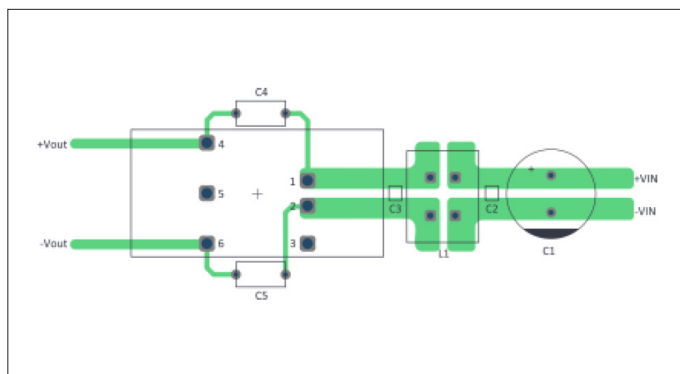
EMI Consideration

Suggested filter to comply with EN 55032 Radiated Emissions Class A limits

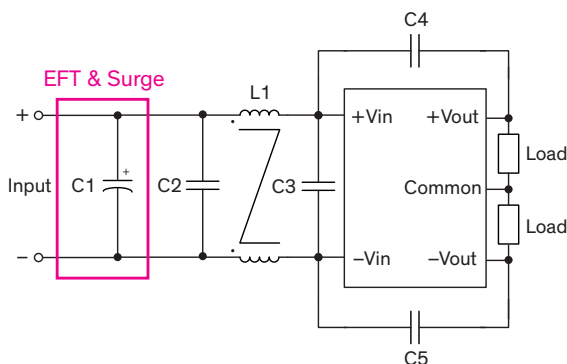
Single output models



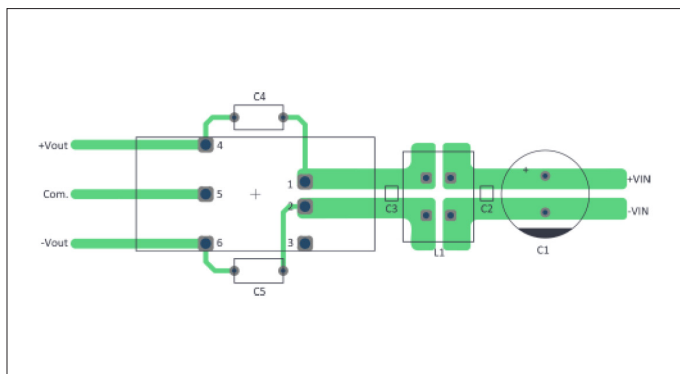
PCB layout suggestion



Dual output models



PCB layout suggestion

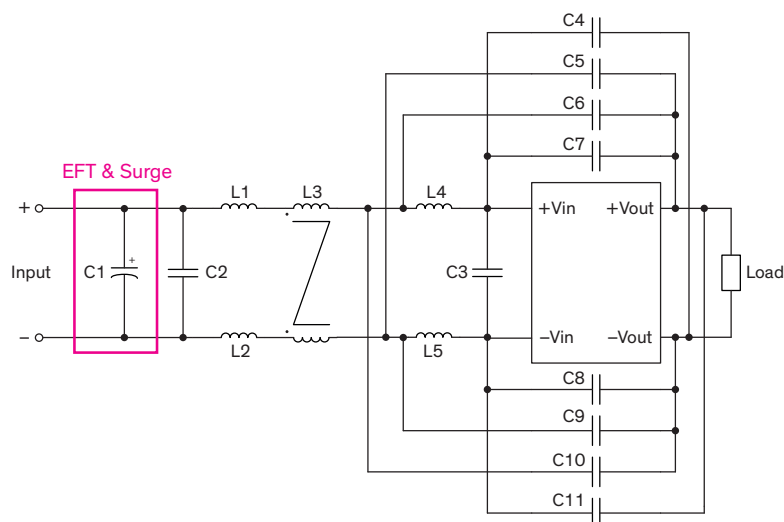


Suggested components to comply with EN 55032 Radiated Emissions Class A limits

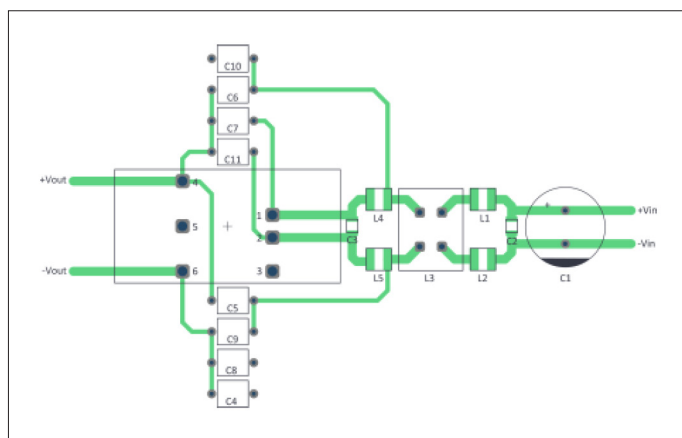
Model	C1	L1	C2, C3	C4	C5
THR 10-24xxWI	390 μ F / 63 V / KY	1 mH / 2 A / 45 m Ω 744821201	-	2200 pF / 250 V / Y1 YU0AH220M130	-
THR 10-48xxWI	330 μ F / 100 V / KY	0.042 mH / 6.5 A / 8.1m Ω 744842742	4.7 μ F / 100 V 1210 X7S	2200 pF / 250 V / Y1 YU0AH220M130	2200 pF / 250 V / Y1 YU0AH220M130
THR 10-72xxWI	220 μ F / 250 V / KXG	5 mH / 1 A / 220m Ω 744821150	-	2200 pF / 250 V / Y1 YU0AH220M130	-

Suggested filter to comply with EN 55032 Conducted and Radiated Emissions Class B limits

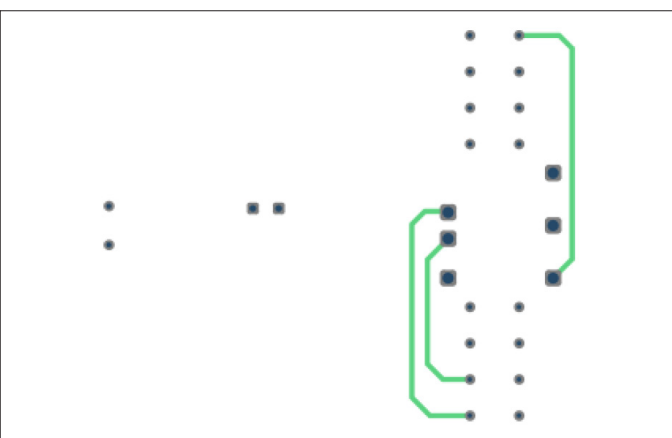
Single output models



PCB layout suggestion (Top View)



PCB layout suggestion (Bottom View)

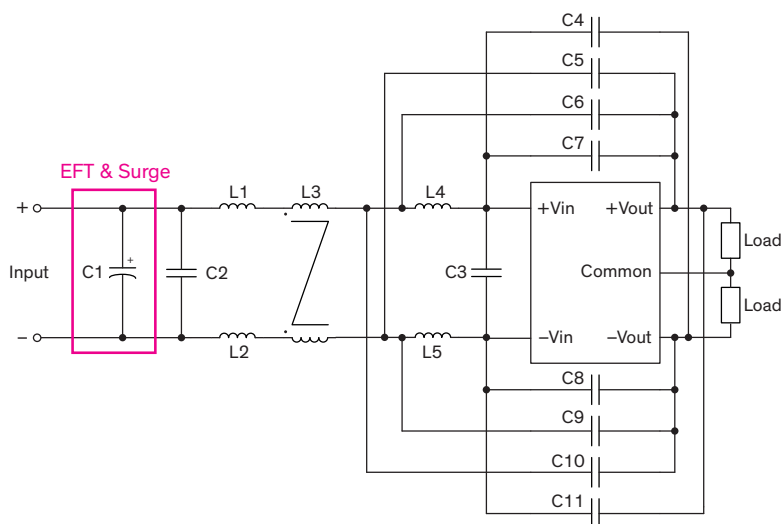


Suggested components to comply with EN 55032 Conducted and Radiated Emissions Class B limits

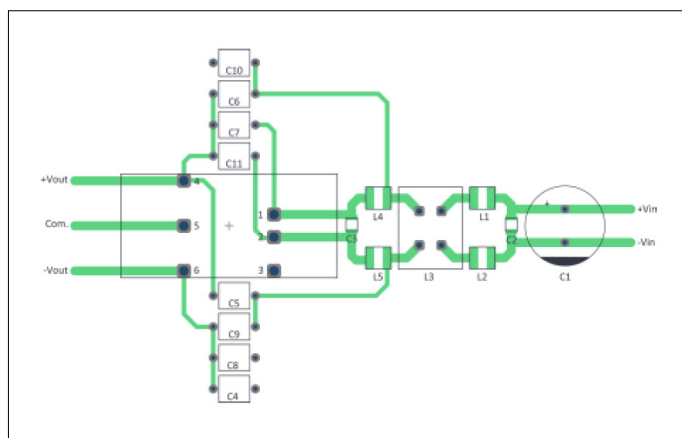
Model	C1	C2, C3	L1, L2	L3	L4, L5	C4, C11	C5, C10	C6, C9	C7, C8
THR 10-24xxWI	390 μ F 63V KY	-	785 Ω 3 A 742792515	0.7 mH 5 A / 15 Ω 7448225007	785 Ω 3 A 742792515	100 pF 400 VAC Y5P Y1	-	100 pF 400 VAC Y5P Y1	100 pF 400 VAC Y5P Y1
THR 10-48xxWI	330 μ F 100 V KY	4.7 μ F 100 V 1210 X7S	1000 Ω 1 A 742792141	2.2 mH 2 A / 70 m Ω 744822222	1000 Ω 1 A 742792141	4700 pF 400 VAC Y5U Y1	-	4700 pF 400 VAC Y5U Y1	2200 pF 400 VAC Y5U Y1
THR 10-72xxWI	220 μ F 250 V KXG	-	1000 Ω 1 A 742792141	3.3 mH 1.5 A / 120 m Ω 744822233	1000 Ω 1 A 742792141	2200 pF 400 VAC Y5U Y1	1500 pF 400 VAC Y5U Y1	-	2200 pF 400 VAC Y5U Y1

Suggested filter to comply with EN 55032 Conducted and Radiated Emissions Class B limits

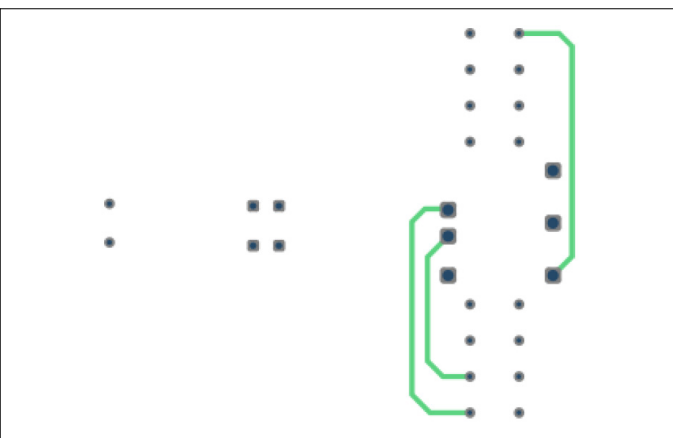
Dual output models



PCB layout suggestion (Top View)



PCB layout suggestion (Bottom View)



Suggested components to comply with EN 55032 Conducted and Radiated Emissions Class B limits

Model	C1	C2, C3	L1, L2	L3	L4, L5	C4, C11	C5, C10	C6, C9	C7, C8
THR 10-24xxWI	390 μ F 63V KY	-	785 Ω 3 A 742792515	0.7 mH 5 A / 15 Ω 7448225007	785 Ω 3 A 742792515	100 pF 400 VAC Y5P Y1	-	100 pF 400 VAC Y5P Y1	100 pF 400 VAC Y5P Y1
THR 10-48xxWI	330 μ F 100 V KY	4.7 μ F 100 V 1210 X7S	1000 Ω 1 A 742792141	2.2 mH 2 A / 70 m Ω 744822222	1000 Ω 1 A 742792141	4700 pF 400 VAC Y5U Y1	-	4700 pF 400 VAC Y5U Y1	2200 pF 400 VAC Y5U Y1
THR 10-72xxWI	220 μ F 250 V KXG	-	1000 Ω 1 A 742792141	3.3 mH 1.5 A / 120 m Ω 744822233	1000 Ω 1 A 742792141	2200 pF 400 VAC Y5U Y1	1500 pF 400 VAC Y5U Y1	-	2200 pF 400 VAC Y5U Y1