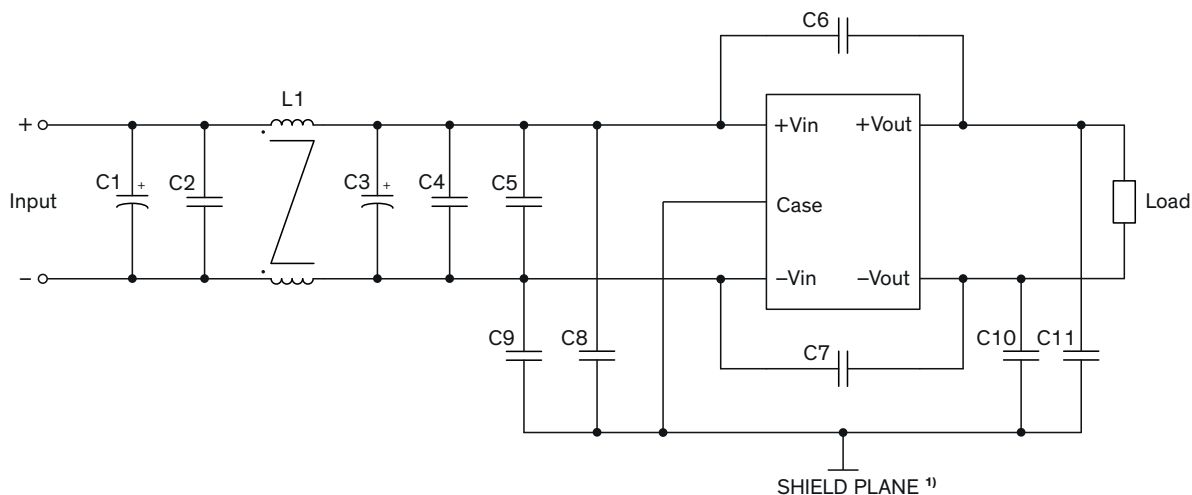


### EMI Consideration

Suggested filter to comply with EN 55032 Conducted and Radiated Emissions Class A limits

#### Circuit suggestions



<sup>1)</sup> SHIELD PLANE: floating / isolated

#### Suggested components to comply with EN 55032 Conducted and Radiated Emissions Class A limits

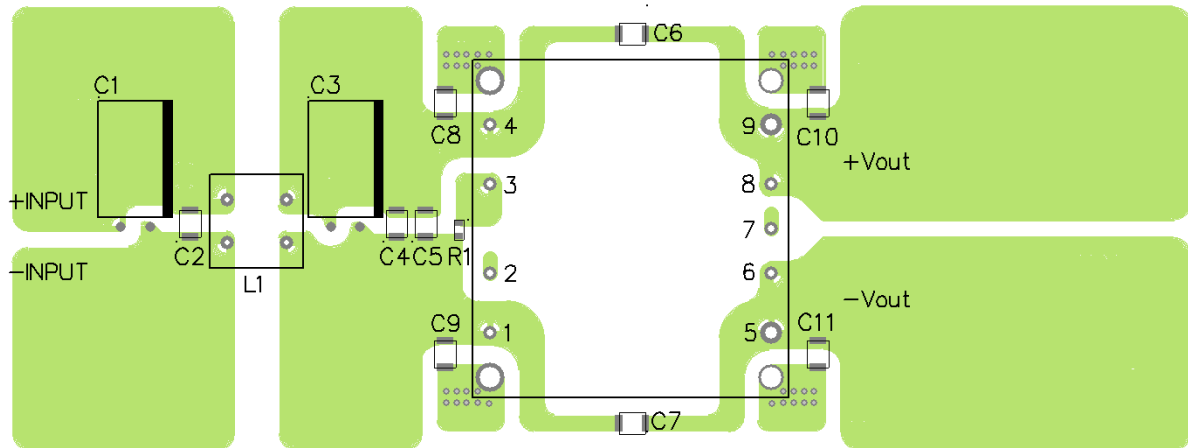
Model	C1, C3	C2, C4, C5	C6, C7, C8, C9, C10, C11	L1
TEP 100-12xx	470 $\mu$ F / 35 V Al. Cap. (lie down) KY	22 $\mu$ F / 25 V 1812 MLCC	1'000 pF / 3 kV 1808 MLCC	156 $\mu$ H / 11.3 A TCK-072
TEP 100-24xx	100 $\mu$ F / 50 V Al. Cap. (lie down) KY	4.7 $\mu$ F / 50 V 1812 MLCC		
TEP 100-48xx	100 $\mu$ F / 100 V Al. Cap. (lie down) KY	2.2 $\mu$ F / 100 V 1812 MLCC		620 $\mu$ H / 7.5 A TCK-067

TCK-072 datasheet: [www.tracopower.com/overview/tck-072](http://www.tracopower.com/overview/tck-072)

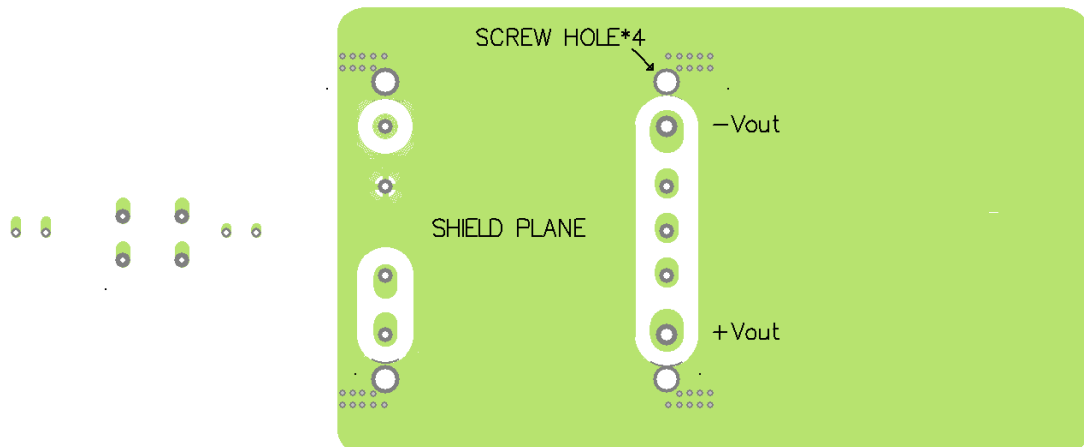
TCK-067 datasheet: [www.tracopower.com/overview/tck-067](http://www.tracopower.com/overview/tck-067)

**Suggested filter to comply with EN 55032 Conducted and Radiated Emissions Class A limits**

PCB layout suggestion, Top view



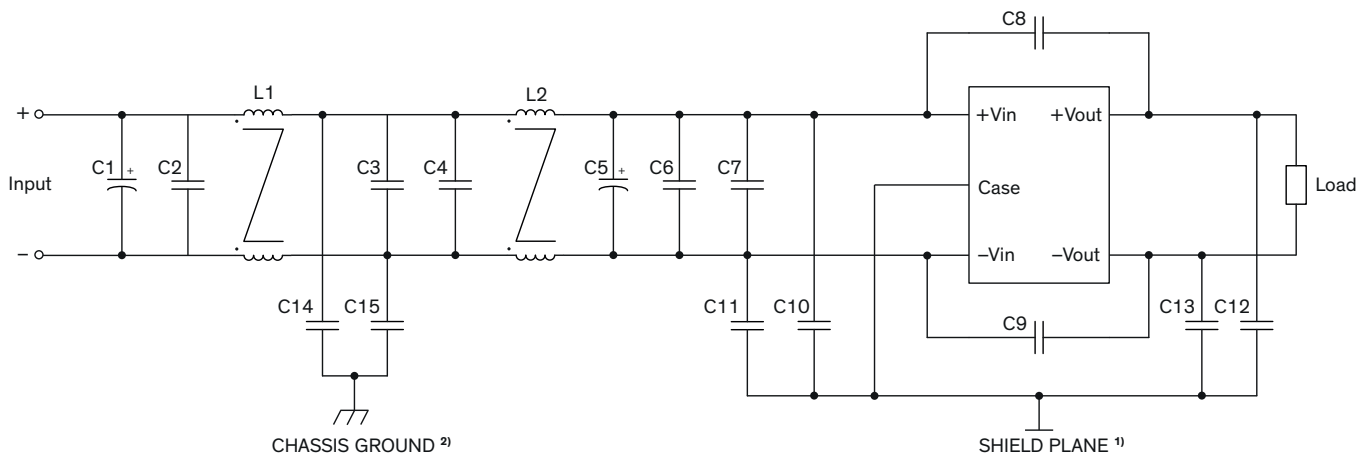
PCB layout suggestion, Bottom view



<sup>1)</sup> SHIELD PLANE: floating / isolated

### Suggested filter to comply with EN 55032 Conducted and Radiated Emissions Class B limits

#### Circuit suggestions



<sup>1)</sup> SHIELD PLANE: floating / isolated

<sup>2)</sup> CHASSIS GROUND: Connect to chassis or earth, if not available leave floating

### Suggested components to comply with EN 55032 Conducted and Radiated Emissions Class B limits

Model	C1, C5	C2, C3, C4, C6, C7	C8, C14, C15	C9	C10, C11, C12, C13	L1	L2
TEP 100-12xx	470 $\mu$ F 35 V Al. Cap. (lie down) KY	22 $\mu$ F / 25 V 1812 MLCC	1'000 pF / 3 kV 1808 MLCC	1'000 pF / 3 kV 1808 MLCC	10 nF / 2 kV 1812 MLCC	305 $\mu$ H 11.3 A TCK-073	305 $\mu$ H 11.3 A TCK-073
TEP 100-24xx	100 $\mu$ F 50 V Al. Cap. (lie down) KY	4.7 $\mu$ F / 50 V 1812 MLCC					
TEP 100-48xx	100 $\mu$ F 100 V Al. Cap. (lie down) KY	2.2 $\mu$ F / 100 V 1812 MLCC		4'700 pF / 3 kV 1812 MLCC		1'186 $\mu$ H 5.8 A TCK-064	156 $\mu$ H 11.3 A TCK-072

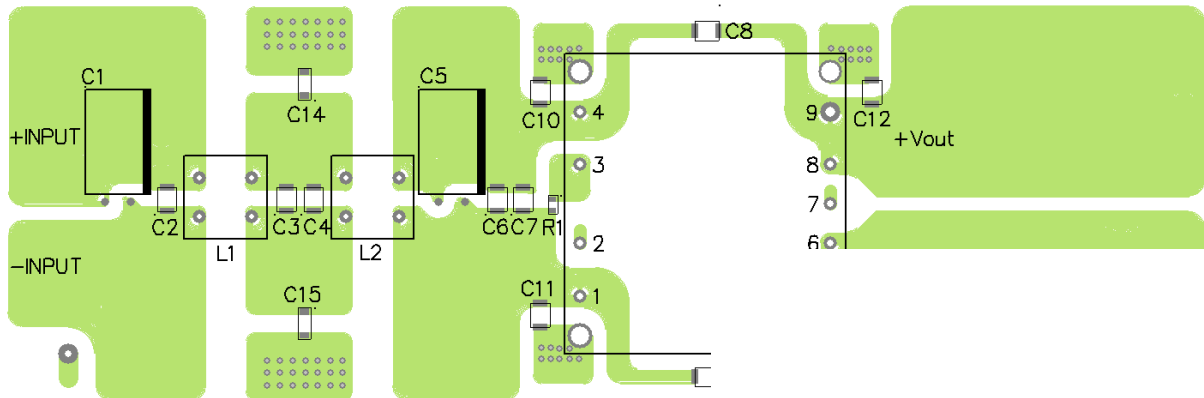
TCK-073 datasheet: [www.tracopower.com/overview/tck-073](http://www.tracopower.com/overview/tck-073)

TCK-064 datasheet: [www.tracopower.com/overview/tck-064](http://www.tracopower.com/overview/tck-064)

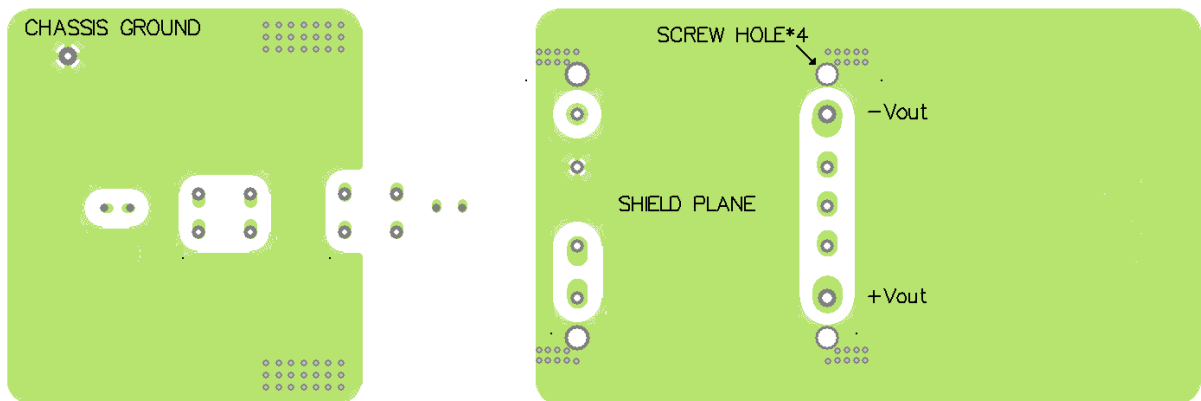
TCK-072 datasheet: [www.tracopower.com/overview/tck-072](http://www.tracopower.com/overview/tck-072)

### Suggested filter to comply with EN 55032 Conducted and Radiated Emissions Class B limits

PCB layout suggestion, Top view



PCB layout suggestion, Bottom view



<sup>1)</sup> SHIELD PLANE: floating / isolated

<sup>2)</sup> CHASSIS GROUND: Connect to chassis or earth, if not available leave floating