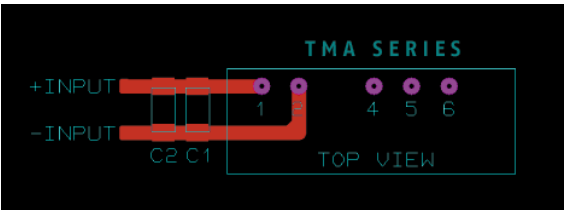
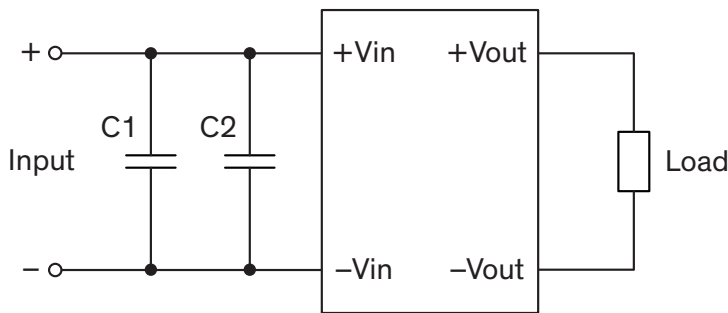


EMI Consideration

Suggested filter to comply with EN 55032 Conducted and Radiated Emissions Class A limits

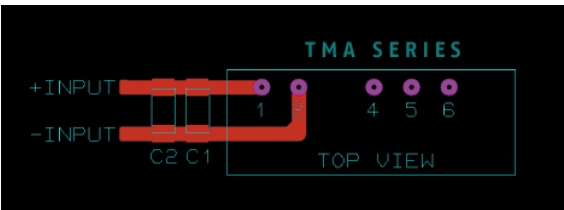
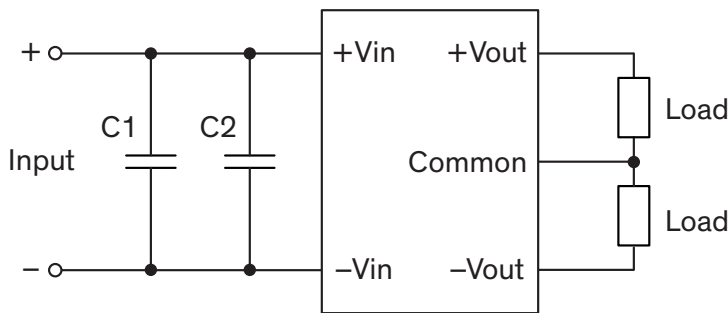
Single output models

PCB layout suggestion



Dual output models

PCB layout suggestion



Suggested components to comply with EN 55032 Conducted and Radiated Emissions Class A limits		
Model	C1	C2
TMA 05xxx	4.7 μ F / 16 V / 1206 MLCC	-
TMA 12xxx	10 μ F / 25 V / 1206 MLCC	-
TMA 15xxx TMA 24xxx	4.7 μ F / 50 V / 1206 MLCC	4.7 μ F / 50 V / 1206 MLCC