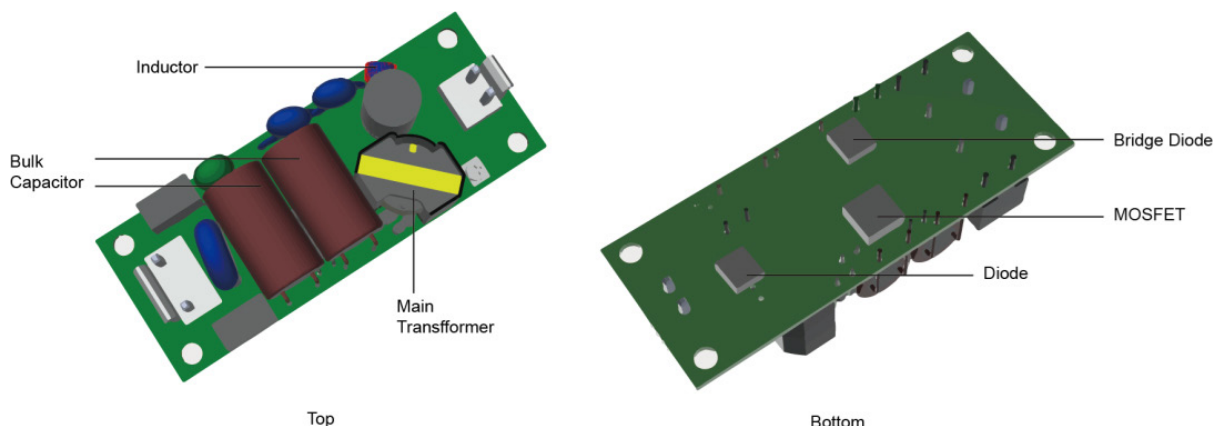


### Thermal Consideration

#### Max. temperature of key components

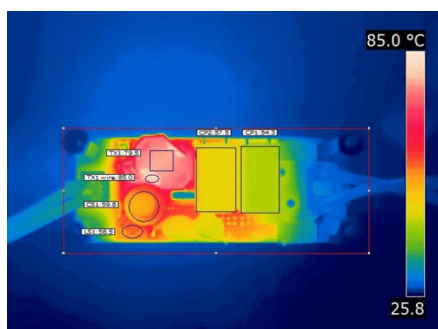


Component	Bridge Diode	Inductor	MOSFET	Bulk Cap.	Diode	Main Transformer
Temp. limit [°C]	120	125	120	105	120	125

Note: - TPP 15-112A-J is chosen as a representative model in this document.

#### Thermal cam images

115 Vin; Full Load; Natural Convection; Top View

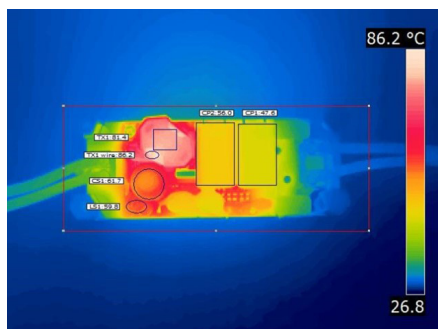


115 Vin; Full Load; Natural Convection; Bottom View

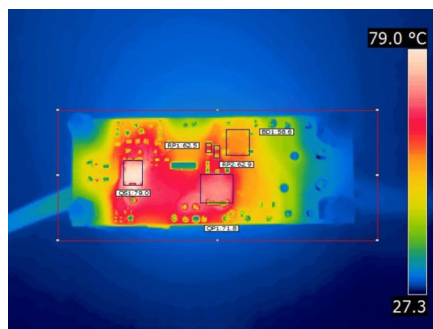


Component	TX1 wire	TX1 core	QP1	QS1	BD1	CS1	LS1	CP1	CP2	RP1	RP2
Temp. [°C]	85	79.5	80.9	80.4	73.4	59.8	58.5	54.3	57.5	75.6	76.7

230 Vin; Full Load; Natural Convection; Top View



230 Vin; Full Load; Natural Convection; Bottom View



Component	TX1 wire	TX1 core	QP1	QS1	BD1	CS1	LS1	CP1	CP2	RP1	RP2
Temp. [°C]	86.2	81.4	71.8	79	58.6	61.7	59.8	47.6	56	62.5	62.9